



Policy Section	Change	Policy Version #	Date Approved	Effective Date
All	Split into Sections	0	September 1, 2020	September 1, 2020
All	Coach expectations as game play evaluators; U16 referees,; No positions in U14	1	June 12, 2022	June 12, 2022
All	Major changes throughout; formatting	2	August 22, 2023	August 28, 2023

## 8.0 EVALUATIONS POLICY

### 8.1 Purpose

8.1.1 The primary purpose of the Bow View Ringette (BVRA) evaluation process is to place players on teams that are appropriate to their age, development, and skill level. Additionally, the evaluation process allows the association to comply with the Ringette Alberta requirement to assess athletes using the Universal Athlete Assessment (UAA) and to determine the appropriate number of teams at each tier level in accordance with guidelines from Ringette Alberta.

8.1.2 The guiding principles of the process are:

**Transparency** - Details regarding the evaluation process will be made available to all BVRA members for review on the association’s website and/or communicated via various channels. Prior, during and after the sessions, Evaluations Team members will be available to any parent or guardian that has a question about the process or results thereof. Note that individual player results or player comparisons will not be discussed or shared under any circumstances.

**Accuracy** - All efforts will be made to follow the guidelines described herein, and conduct the process as accurately as possible. Redundancies, review and verification procedures will be implemented at every stage of the evaluations process to ensure accuracy of the results.

**Objectivity** - The evaluations process will be as fair and impartial to all players as reasonably possible. Outcomes of the evaluations will solely be based on the data collected and the rankings derived therefrom. In rare circumstances where the player placement must be adjudicated without current evaluations data, it will be done in an unbiased, data-informed manner. Evaluations, data handling and processing, rankings or any decisions related to the evaluations process will never be done by person(s) with a conflict of interest.



## Bow View Ringette Association

### 8.2 Evaluations Process Overview

8.2.1 At the start of each season, all players will participate in the BVRA evaluation process. For skaters, the process generally consists of a game play seeding step, followed by a series of game play (GP) evaluations where skaters are either removed from the process and placed in the highest or lowest tier, or evaluated in a subsequent game play alongside a different grouping of similarly skilled skaters.

8.2.2 The following table outlines the key parameters in the BVRA evaluation process for the different divisions.

Division	Size of Nets	Usage of Ice	Game Play Seeding	Game Play	Position Rotation	Tiering Notes	Typical Evaluations Start Date
Active Start	small	cross-ice	n/a	none	n/a	n/a	After Sept long weekend
U10 Step 1	small	half-ice	UAA	3-on-3	full rotation	n/a	During Sept long weekend
U10 Step 2	small	half-ice	UAA	3-on-3	full rotation	n/a	During Sept long weekend
U10 Step 3	small	full ice	UAA	3-on-3 5-on-5	full rotation	n/a	During Sept long weekend
U12	regular	full ice	UAA	3-on-3 5-on-5	full rotation	n/a	During Sept long weekend
U14	regular	full ice	UAA	5-on-5 3-on-3	full rotation	n/a	After Calgary AA evaluations have completed
U16	regular	full ice	player path	5-on-5 with referees	preferred position considered	Declaration of lower tier allowed	After Calgary AA evaluations have completed
U19	regular	full ice	player path	5-on-5 with referees	preferred position considered	Declaration of lower tier allowed	After Calgary AA evaluations have completed



## Bow View Ringette Association

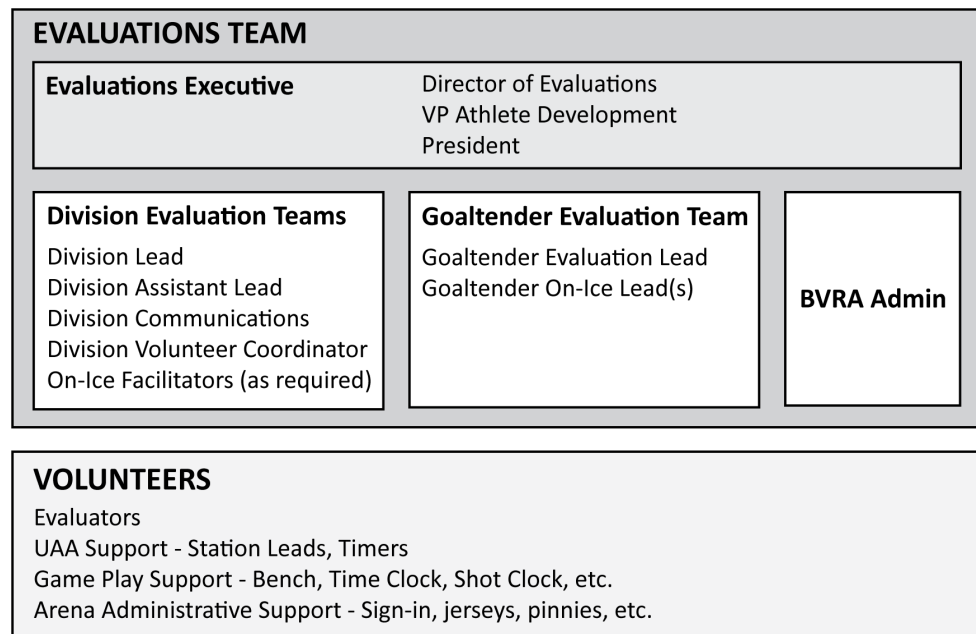
### 8.3 Evaluations Process Timing

8.3.1 The evaluation process will typically start on the Saturday of the long weekend in September for U10 and U12 age groups. In years where the long weekend falls after the start of classes in the Calgary school divisions, evaluations may start before the long weekend in September and continue throughout the long weekend for all age groups.

**Ringette Alberta mandates that evaluations may not start before September 1. BVRA will request approval to start on the Saturday of the long weekend if it falls before September 1.**

### 8.4 Evaluations Staff

8.4.1 The evaluations process relies on volunteers to fulfill the many required roles and duties, as shown below.





## Bow View Ringette Association

### 8.5 Exemptions from Evaluations

8.5.1 All players are expected to participate in the evaluations process. However, if a player is unable to do so, alternate tier placement processes will be employed.

8.5.2 **Medical Exemptions** - In case of an injury or a medical requirement that a player is unable to partake in a part or whole of the evaluations process, the following procedures will be followed:

8.5.2.1 Player's parents or guardians must inform the Evaluations Team of the planned absence, as early as possible prior to the scheduled evaluations sessions.

8.5.2.2 Player's parents or guardians must complete the Evaluations Exemption Form indicating the reason for absence and acknowledging the process by which their player will be placed in a tier within their division.

8.5.2.3 A dated note from a doctor or a certified medical professional specifying the injury or medical condition precluding the player from participating in the evaluations sessions is required to be provided to the Evaluations Team.

8.5.2.4 The exempted player's placement in a tier will be determined by a "two above, two below" approach, wherein the two players ranked immediately above, and two players ranked immediately below them in the evaluations seeding rankings, or in the last stage of the current season's evaluation process in which they've partaken, are followed through the evaluations process. The exempted player will be placed in a calculated median rank (rounded down) among those four players as they progress through each remaining stage of the evaluations process.

If one or more of the followed players do not remain in the same game play as the rest, the game play with the most of those players will be used for the placement of the exempted player. Otherwise, the higher game play will be used.



## Bow View Ringette Association

Example:

*The exempted player is ranked 18th at the time of injury or illness, in this case prior to the first round of game plays, and thus will follow players ranked 16th, 17th, 19th and 20th as shown below.*

Rank	Seeding	GP Round 1	GP Round 2	GP Round 3	Final Rank
11				Player B	Player B
12		Player A	Player A	Player A	Player A
13			Player B	Exempted	Exempted
14				Player C	Player C
15		Player C	Exempted		
16	Player A	Exempted			
17	Player B		Player C		
18	Exempted	Player B			
19	Player C				
20	Player D			Player D in another GP, so no longer considered.	
21					
22			Player D		
23		Player D			
24					
25					

*After the first game play, considering the ranking of the followed players, the exempted player is ranked 16th (Median rank = 16.5, rounded down to 16). This player proceeds to the next round of game plays as a 16th ranked player would.*

*After the second game play, the exempted player is ranked 15th. However, the ranking of Player D (22nd) places them into a lower game play, so they are no longer considered in the calculation.*

*After the third game play, the exempted player is placed based on the median rank of players A, B and C, and are ranked 13th. As that is the last game play for these players, the final rank for the exempted player is 13th overall, and they will be eligible to be drafted accordingly.*

- 8.5.2.5 If the exempted player is new to Bow View, and they have not partaken in any part of the current season’s evaluation process, their previous play history will be assessed, and at the discretion of the Evaluations Executive, they will be placed into the draft for an appropriate tier within their division.



## Bow View Ringette Association

- 8.5.2.6 The exempted player will be listed on the draft sheet at their determined ranking with the note, "Did Not Evaluate - Medical" without any further information provided.
- 8.5.3 **Non-Medical Exemptions** - For all other circumstances due to which a player plans to miss a part or whole of the evaluations process (e.g., travel, priorities, scheduling conflicts, etc.), the following procedures will be followed:
- 8.5.3.1 Player's parents or guardians must inform the Evaluations Team of the planned absence, as early as possible prior to the scheduled evaluations sessions.
- 8.5.3.2 Player's parents or guardians must complete the Evaluations Exemption Form indicating the reason for absence and acknowledging the process by which their player will be placed in a tier within their division.
- 8.5.3.3 The Evaluations Executive will consider the player's history, previous evaluations results, coach evaluations, and previous coaches' input to determine the appropriate placement in the draft for their division. The decision on placement will be considered final and no appeals or grievances will be heard.
- 8.5.3.4 The placement determination will be limited to specifying the tier which the player is deemed to be appropriate for, and whether they are to be "secured" or "unsecured".
- 8.5.3.5 The exempted player will be listed last on the draft sheet in their determined category ("secured" or "unsecured") in a given tier with the note, "Did Not Evaluate - Non-Medical" without any further information provided.
- 8.5.4 **No Shows** - If a player misses a scheduled evaluations session, the following procedures will be followed:
- 8.5.4.1 The player, their parent or guardian must inform the Evaluations Team immediately of the reason for absence. As the subsequent evaluation placements are assigned shortly after the results of the session are compiled, this notification must be made within 6 hours of the start of the missed evaluation session.
- 8.5.4.2 If the stated reason for absence is due to an injury or medical requirement, procedures outlined in Policy 8.5.2 will be followed.



## Bow View Ringette Association

- 8.5.4.3 If the stated reason for absence is due to circumstances outside of the player's or their parents'/guardians' control, and at the discretion of the Evaluations Executive, procedures outlined in Policy 8.5.3 will be followed.
- 8.5.4.4 Failure to notify the Evaluations Team of the reason for absence within the specified period, or providing an invalid reason for absence will result in the player being ranked last for the missed evaluation session and subsequent placement will be determined according to the evaluations procedures outlined herein.
- 8.5.4.5 The exempted player will be listed on the draft sheets as outlined in Policy 8.5.2 or 8.5.3 as applicable to the situation. In the case of 8.5.4.4, the player will be listed accordingly on the draft sheet with the note, "Did Not Evaluate - No Show" without any further information provided.

### **8.6 Player Declaration of Lower Tier**

- 8.6.1 For U16 and U19 divisions, BVRA will allow players to declare that they wish to play at the lower tiers, by indicating so at registration or by a prescribed deadline.
- 8.6.2 However, in order to provide even competition for players wishing to try out at the higher tiers, it is required that players attend all evaluation game plays that they are assigned.
- 8.6.3 In U10 only, beginner skaters, as suggested by the UAA score of 8 or lower, that are new to the sport of ringette, will not be involved in the game play evaluations and will be placed directly into U10 Step 1.

### **8.7 Universal Athlete Assessment (UAA) / Skills Skate**

- 8.7.1 Applicable only to U10, U12 and U14 skaters, and are required by Ringette Alberta.
- 8.7.2 Seeding for the UAA is done based on skater history (combination of division and tier from the last two years) as well as end of year coach-player evaluations. Being seeded in any particular UAA does not preclude a skater from being placed in any game play.
- 8.7.3 UAA consists of standardized skating drills as determined by Ringette Alberta.



## Bow View Ringette Association

### 8.8 Skater Game Play Evaluations

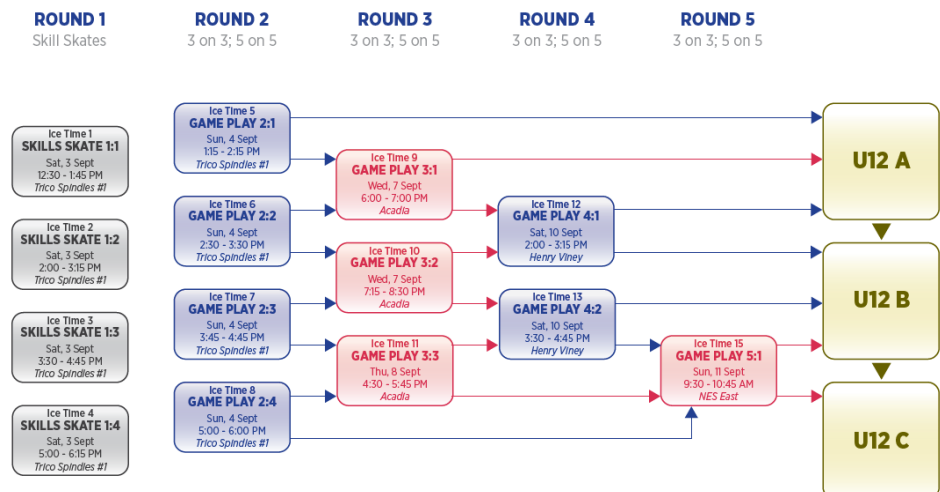
8.8.1 A seeding process is used to determine which first game play skaters will be placed in.

8.8.1.1 For U10, U12, and U14 divisions, UAA scores will be used as the basis for seeding skaters in the initial game play. Top ranked scores will be placed in the 1:1 game play, and the game play spots will be filled in descending order of the UAA scores.

8.8.1.2 For U16 and U19, the skater history (combination of division and tier from the last two years) as well as end of year coach-player evaluations will be used to determine the seeding of the initial game play. End of year coach-player evaluations or final game play evaluation results from the previous year will be used to break ties as necessary.

8.8.2 In the game play evaluations, the skaters will be ranked against every player that is on that ice session by evaluators drawn from within the association whenever possible. In prescribed numbers, skaters will advance to the next game play series or will be removed from the process, depending on their ranking in that game. In each new game play series the scoring starts over; there is no cumulative or aggregate scoring.

8.8.3 An example of the typical evaluations flow is shown below. This is a U12 evaluation, which includes UAA skill skates (Round 1, grey).







## Bow View Ringette Association

- 8.8.4 Game play evaluation process is carried out by non-biased evaluators, who do not have children playing in the age group that they are evaluating. Evaluators are composed of BVRA coaches, parents of children who play in the age group above, or persons that the Evaluations Executive deems capable of evaluating a certain age group. U16 and U19 players may be evaluators for players two divisions below or younger. A conflict-of-interest declaration will be signed by all evaluators. Evaluators will be trained on what criteria to evaluate, and will be given detailed instructions on how to assign a full range of scores. Scores will be assessed in a single category, one 'team' per period, over a range of 1 to 10. Each evaluator will be required to have every score within the range assigned. Evaluator scoring data will be examined by the Division Evaluations Coordinator and the Evaluations Executive for the purpose of determining the overall ranking of each player in the session.
- 8.8.5 Coaches are encouraged to take a lead role in game play evaluations for divisions in which their children do not play. Approximately 60% of the evaluator positions are reserved for coaches and alumni, and the sign-up will be separate from the public sign-up from which the remaining evaluator positions will be filled. They may evaluate below their division without approval from the Director of Evaluations. Evaluating above their children's division requires approval from the Director of Evaluations. Commitment to volunteering for game play evaluations may be a deciding factor in the Coach Selection process.
- 8.8.6 For U10S1 and U10S2, the game play process involves 3-on-3 play on half-ice. Two 'games' will be happening on the ice during every game play session. The buzzer is sounded in 1.5 minute intervals to indicate line changes. An on-ice facilitator keeps the play moving by placing new rings into play at each buzzer.
- 8.8.7 Players whose skill level places them between U10S2 and U10S3 may play some game play sessions on half-ice, and other game play sessions on full-ice.
- 8.8.8 For U10S3, U12 and U14, the game play process involves a mix of 3-on-3 and 5-on-5 play in each period. The buzzer is sounded in one (1) minute intervals to indicate line changes. An on-ice facilitator keeps the play moving by placing new rings into play at each buzzer. There will be no declared positions until U16.
- 8.8.9 For U16 and U19, the game play process only includes 5-on-5 play. Certified referees will be utilized to ensure the games are played as authentically as possible.



## Bow View Ringette Association

### 8.9 Goaltender Evaluations

- 8.9.1 All goaltenders will participate in the evaluations process.
  - 8.9.1.1 Full Time Goaltenders (FTG) will undergo a skills evaluation and a minimum of two (2) game play evaluations.
  - 8.9.1.2 Hybrid Goaltenders (HG) will undergo a skills evaluation.
- 8.9.2 In all evaluations, goaltenders will be scored on a number of criteria, and then ranked based on the cumulative score.
- 8.9.3 Whenever possible, game play evaluations for FTG will take place in the highest game plays in the division (e.g., GP 1:1, GP 2:1, GP 3:1).
- 8.9.4 In each game play, up to six (6) FTG will be evaluated. They will rotate their time in goal on a prescribed basis, typically every 5 minutes.
- 8.9.5 If there are more than six (6) FTG to be evaluated in a division, they will be divided in groups and game play evaluations will occur in the highest and second highest game plays (e.g., GP 1:1, GP 1:2, GP 2:1, GP 2:2) equitably.
- 8.9.6 In order to maintain game authenticity for the skaters, FTG are required to play one or more additional games during their division evaluations, in which they will not be assessed.

### 8.10 Team Tier Split Determination

- 8.10.1 The split of teams between tiers is based upon guidelines from Ringette Alberta.
- 8.10.2 In the U10, U12 and U14 divisions, tiers are determined by Target Team Score ranges, based on UAA testing results, as outlined in the Ringette Alberta Tiering Policy - Section 4.4.2.4. Once the UAA scores are compiled for each division, the Evaluations Team analyzes the UAA scores and calculates averages based upon different configurations of teams at each tier. Historical data is used to estimate how much different the actual team averages will be from the top 26 skater score average, for the two teams case as an example.
- 8.10.3 In the U16 and U19 divisions, Ringette Alberta mandates the number of tiers an association can create for each division based on the number of registered players.



## Bow View Ringette Association

- 8.10.4 Additionally, the three Calgary associations will typically compare data with each other for the purposes of targeting competitive equity for every tier.
- 8.10.5 The authority for the tiering decisions is the Evaluations Executive, and its decisions are final.

### **8.11 Secured and Unsecured Spots**

- 8.11.1 BVRA team formation process calls for coach-pick drafting of teams, per guidelines detailed in the Team Draft Procedure Policy (9.0).
- 8.11.2 For the top tier of every division, BVRA secures approximately 80% of the spots. Skaters whose evaluations results have placed them in these spots are said to have “secured <top tier>”.
- 8.11.3 During the course of the evaluations process, skaters are placed in the secured spots, as follows:
  - 8.11.3.1 The top ranked 20-25% (approximately, allowing for rounding and ties) of skaters in the top game play evaluation (e.g., GP 1:1; or GP 2:1 when UAA’s are mandated), will become secured.
  - 8.11.3.2 The remaining secured spots will be filled by the top ranked skaters in the subsequent game play (e.g., GP 2:1, or GP 3:1 when UAA’s are mandated).
  - 8.11.3.3 Skaters whose evaluation results place them outside of the top ~80% for the top tier will continue to be evaluated through subsequent game plays and their overall ranking will be determined.
- 8.11.4 Skaters ranked ~80% to ~125% are considered “unsecured” for the top tier, are presented on the top tier draft sheet and may be selected by coaches during the team draft process.
- 8.11.5 Unsecured skaters who are not selected in the top tier team draft become secured skaters in the subsequent tier’s draft.
- 8.11.6 Percentages and values specified above may vary between divisions and seasons, and are subject to change. Approximate values presented.



## Bow View Ringette Association

Example:

Note: The percentages, player and team counts and calculations below are for illustrative purposes only.

*There may be 84 skaters in the U12 division participating in the evaluations. It has been determined that there will be 7 teams created, with 12 players on each, in tiers as follows: 2A, 3B, 2C.*

*Top tier (A) in this case is expected to have 24 skaters (2 teams of 12 skaters). Of those 24 spots, 80% will be secured (calculated to 19.2, but rounded up to 20 in this case). Those 20 spots will be filled by the highest ranked skaters in the top game play evaluations (in U12, those are 2:1 and 3:1, see example flowchart in 8.8.3).*

*From the game play 2:1, which had 28 skaters, the highest ranked 6 skaters (21.4%) are placed in the secured A spots (there are now 14 spots vacant). The remaining 22 skaters will proceed to game play 3:1.*

*In game play 3:1, there are 28 skaters (22 skaters from GP 2:1, and 6 skaters from GP 2:2). The highest ranked 14 skaters are placed in the remaining secured A spots. The other 14 skaters from GP 3:1 will proceed to GP 4:1, where they will be joined by another 14 skaters from GP 3:2.*

*The highest ranked 10 skaters in GP 4:1 will be placed in the unsecured spots for the tier A draft, 4 of which may be selected at the discretion of the drafting head coaches.*

Skaters in tier A draft:

<i>Drafting 2 teams, 12 skaters each = 24 skaters total</i>				
From	Status	Available	To be drafted	% of selected A skaters
GP 2:1	Secured	6	6	25%
GP 3:1	Secured	14	14	58%
GP 4:1	Unsecured	10	4	17%
TOTAL		30	24	



## Bow View Ringette Association

### 8.11.7 Secured spots for FTG are determined as follows:

The top ranked FTG in the division, as indicated by their cumulative evaluations score (see Section 8.9) will become secured and must be drafted to one of the teams in the highest tier of the division, unless:

(a) The cumulative evaluations scores of the top two ranked FTG in the division are within five (5) points of each other. In this case, both FTG will become secured and must be drafted to teams in the highest tier of the division. If there is only one team in a tier, the Head Coach of the team will decide which FTG to draft. The other FTG will become secured for the subsequent tier's draft, or

(b) If the cumulative evaluations scores of the top three or more ranked FTG in the division are within five (5) points of each other, no FTG will be considered secured, and any FTG presented on the draft sheet may be selected in any order.

This logic is to be applied for every subsequent tier's draft.

### 8.11.8 Per Player Policy 6.2.6: "FTG are not guaranteed top tier". Upon reviewing the FTG evaluations results, development path, coach feedback, and in consultation with the parents or guardians of the FTG, the Evaluations Executive has the authority to determine the highest tier in which a FTG is eligible to be drafted.

## 8.12 Head Coach Selection

8.12.1 The Evaluations Team will communicate with the VP Coaches in order to maintain an understanding of which tier players, whose parents have applied to be head coaches, are trending towards. Only once players have secured placement in a given tier, the VP Coaches will initiate the coach selection process outlined in Team Staff Policy (7.0).

## 8.13 Team Formation Interfaces

8.13.1 The Evaluations Team will supply ranked player lists that include the cut-offs for secured players and other information that is pertinent to the team draft process (detailed in Team Draft Procedure Policy (9.0)). Members of the Evaluations Team will be present at the draft to answer questions about the evaluation process that are specific to the player rankings that were provided.